

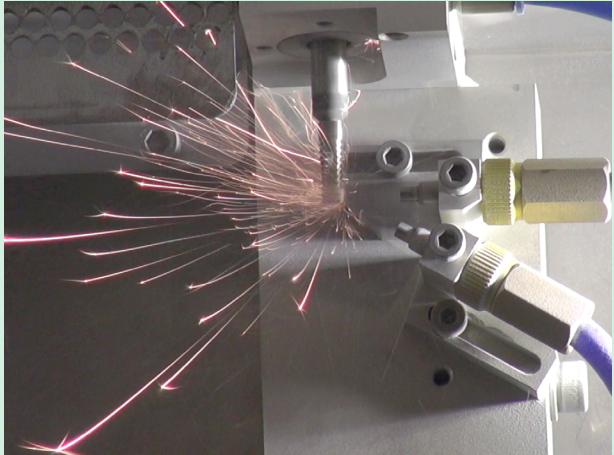
ST200 Programmable Sand Blaster



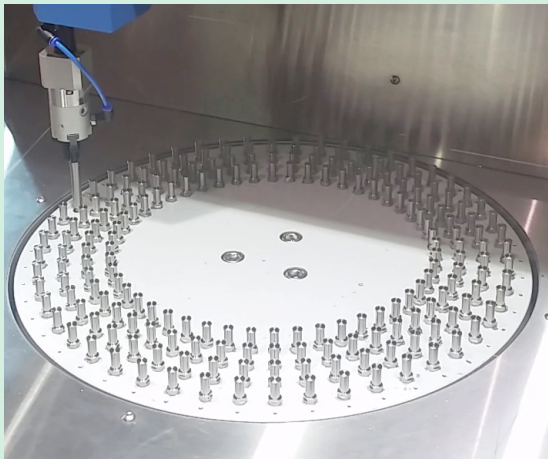
The ST200 system is an innovative solution for medical screws and dental implants sand blasting.

The machine's operation is fully automated and programmable, using a friendly and easy-to-use touch screen interface.

With an intense and precise blasting, the machine gives excellent results, with minimal blasting material usage.



The machine's operation is very quiet and has an advanced air filtration system, which guarantees very clean and quiet operation. This makes the machine suitable, not only for industrial spaces, but for office spaces as well.



Features

- Fully automated operation.
- Fully programmable.
- Unlimited number of blasting programs.
- Economical and efficient blasting material usage.
- Very precise blasting.
- Sharp edge finishing - No need for masking.
- Quiet and clean operation.
- Small dimensions - minimal floor space.
- Easily adjustable blasting nozzles.

Specifications

- Air Supply**
Pressure: 5-7 bar
Quality: Dried to -25° F dew point (200 ppm of moisture) and oil content filtered to <10 ppm
Consumption: Approx. 0.4 m³ / min
- Power**
230V 50Hz/60Hz 1kW
- Dimensions (WxHxD)**
Approx. 1283x2043x918 mm

